

THE WAND[®]

MICROACCESS

Accelerated
SELDINGER TECHNIQUE

- **Faster**
- **Safer**
- **Simpler**

**ALL-IN-ONE
SAFETY
INTRODUCER**



Guidewire

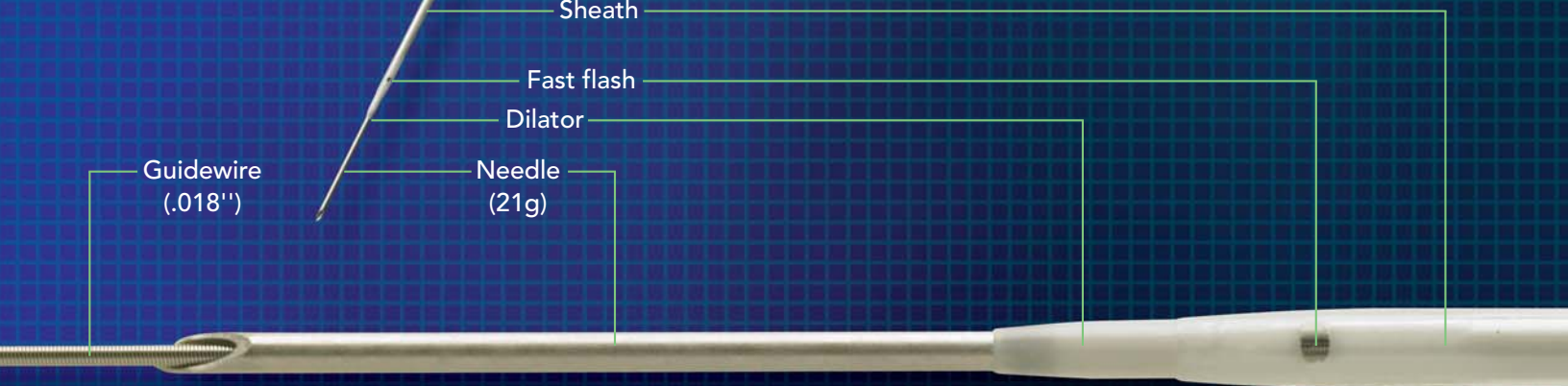
Sheath

Fast flash

Dilator

Needle
(21g)

Guidewire
(.018")



Accelerating The Seldinger Technique to New Levels of Safety and Performance.

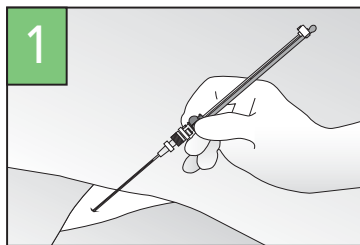
Introducing The WAND® and the Accelerated Seldinger Technique—the next great advance in vascular access technology.

In 1953, the newly introduced Seldinger Technique represented a significant improvement in vascular access technology. Later, the Modified Seldinger Technique further advanced ease-of-access, by using a dilator coupled with a sheath, and eventually evolved into today's standard, over-wire insertion technique.

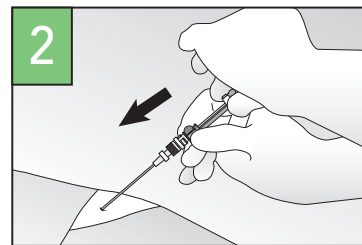
Despite its advantages, hazards are associated with the Modified Seldinger Technique. These include: accidental needlestick injury, guidewire embolus, contamination, bleeding, lost cannulation during the procedure... and more.

The WAND enables healthcare providers to utilize the new Accelerated Seldinger Technique, representing a quantum leap forward in vascular access technology. The WAND is an all-in-one (needle-guidewire-dilator-sheath) safety introducer that speeds over-wire vascular access while reducing the risk of guidewire embolus, contamination and accidental needlestick injury. Experienced clinicians are hailing The WAND as the new standard in vascular access technology—faster, safer and simpler.

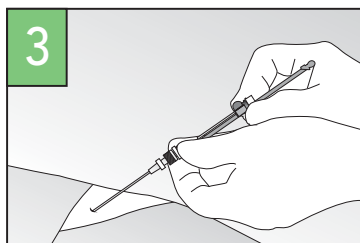
How to use The WAND for MicroAccess introducers.



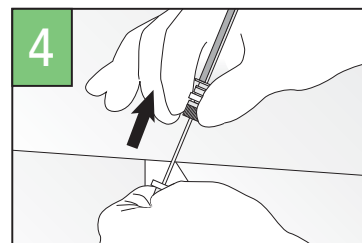
1 Insert needle into vessel and observe blood flash in transparent sheath.



2 Advance guidewire and lock in place.



3 Hold needle in place while advancing dilator and sheath.



4 Remove dilator, needle and guidewire together.

Please consult complete directions for use prior to using The WAND.



WAND® Configurations

Item Number	Item Name
90009	WAND® MicroAccess Safety Introducer, 4 Fr, 21 ga Standard Needle, Nitinol Guidewire
90010	WAND® MicroAccess Safety Introducer, 4 Fr, 21 ga Echogenic Needle, Nitinol Guidewire
90011	WAND® MicroAccess Safety Introducer, 5 Fr, 21 ga Standard Needle, Nitinol Guidewire
90012	WAND® MicroAccess Safety Introducer, 5 Fr, 21 ga Echogenic Needle, Nitinol Guidewire



12526 High Bluff Drive, Suite 360
San Diego, CA 92130
T 858.259.8333
F 858.259.5298
www.the-wand.com