

PEELABLE SHEATH

# THE PICC WAND™

MICROPUNCTURE

Guidewire

**Accelerated**  
SELDINGER TECHNIQUE

- **Faster**
- **Safer**
- **Simpler**

**ALL-IN-ONE  
SAFETY  
INTRODUCER**

*For PICCs and Midlines*

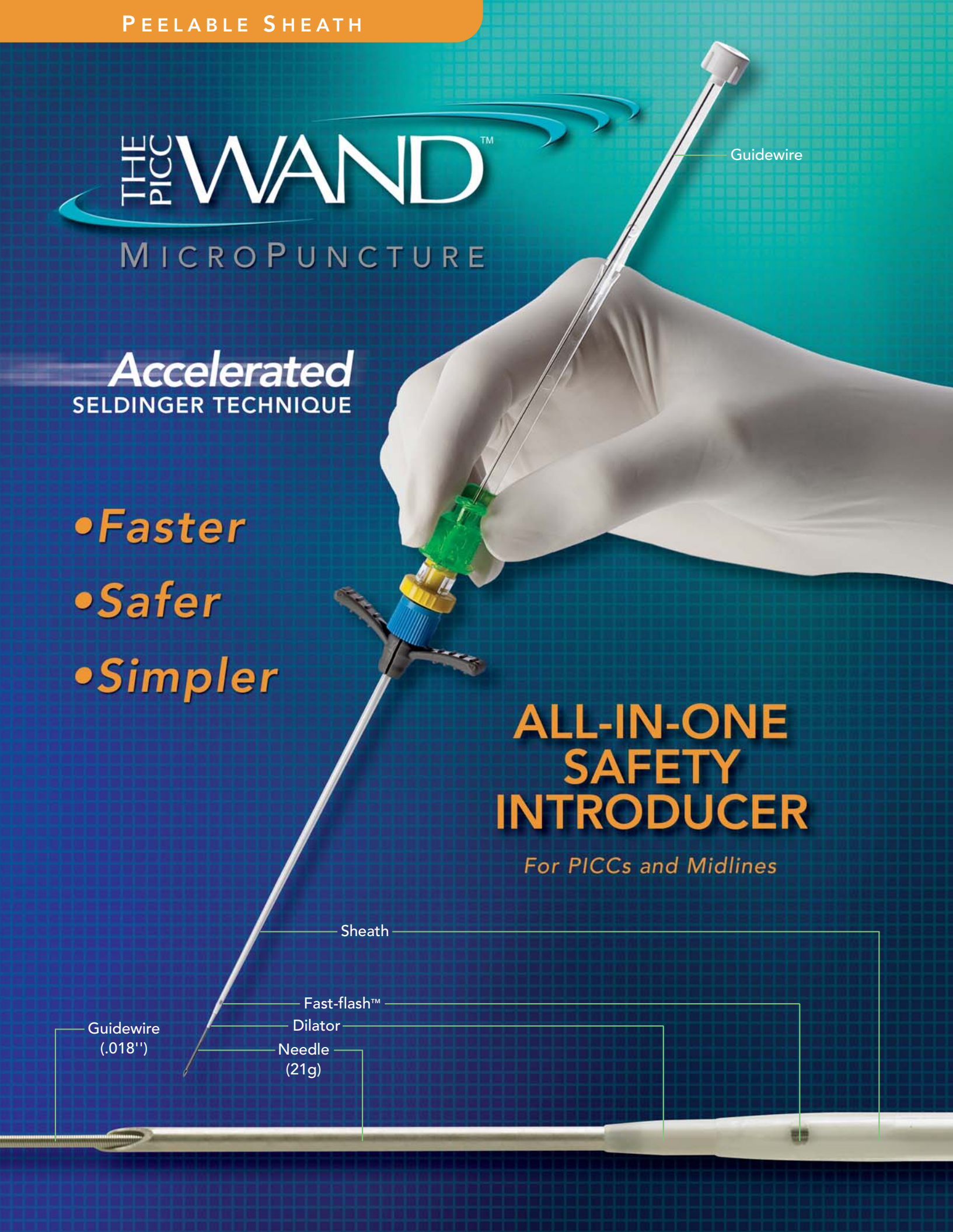
Sheath

Fast-flash™

Dilator

Needle  
(21g)

Guidewire  
(.018")



# Accelerating The Seldinger Technique to New Levels of Safety and Performance.

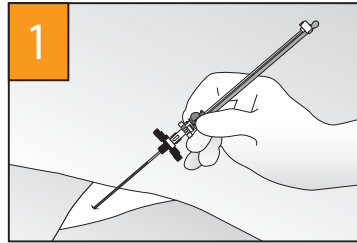
Introducing The PICC WAND™ and the Accelerated Seldinger Technique (AST)—the next great advance in vascular access technology.

In 1953, the newly introduced Seldinger Technique represented a significant improvement in vascular access technology. Later, by using a dilator coupled with a sheath, the Modified Seldinger Technique evolved into today's standard, over-wire insertion technique.

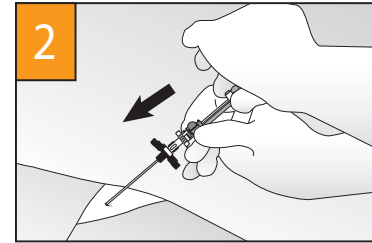
Despite its advantages, hazards are associated with the Modified Seldinger Technique. These include: accidental needlestick injury, guidewire embolus, contamination, bleeding, lost cannulation during the procedure... and more.

The WAND enables healthcare providers to utilize the new Accelerated Seldinger Technique, representing a quantum leap forward in vascular access technology. The WAND is an all-in-one (needle-guidewire-dilator-sheath) safety introducer that speeds over-wire vascular access while reducing the risk of guidewire embolus, contamination and accidental needlestick injury. Experienced clinicians are hailing The WAND as the new standard in vascular access technology—faster, safer and simpler.

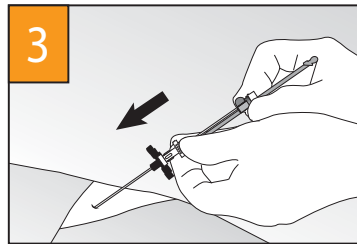
## How to use The PICC WAND Peelable Safety Introducer.



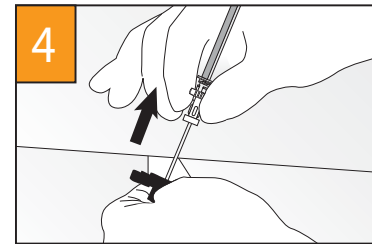
1 Insert needle into vessel and observe blood Fast-flash™ in transparent sheath.



2 Advance guidewire and lock in place.



3 Hold needle in place while advancing dilator and sheath.



4 Remove dilator, needle and guidewire together.

Please consult complete directions for use prior to using The PICC WAND.



### The PICC WAND Configurations

Item Number	Item Name
91010	PICC WAND Safety Introducer, 4 Fr Peelable Sheath, 21 ga Echogenic Needle, Nitinol Guidewire
91009	PICC WAND Safety Introducer, 4.5 Fr Peelable Sheath, 21 ga Echogenic Needle, Nitinol Guidewire
91008	PICC WAND Safety Introducer, 5 Fr Peelable Sheath, 21 ga Echogenic Needle, Nitinol Guidewire



12526 High Bluff Drive, Suite 360  
San Diego, CA 92130  
T 858.259.8333  
F 858.259.5298  
cservice@the-wand.com

[www.the-wand.com](http://www.the-wand.com)